

Hams



1

2

3

4

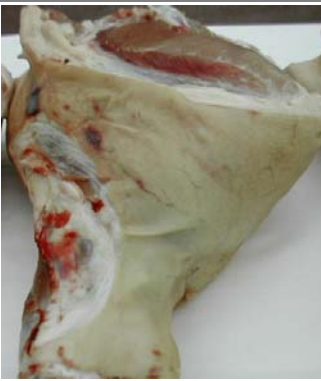


1

2

3

4



1

2

3

4



Official Placings

The official placing of the ham class is 3-2-1-4 with cuts of 4, 4 and 2.

3/2 3 placed over 2 due to a greater combination of muscling and trimness that would yield a higher percentage of closely trimmed center slices. 3 had a greater area of exposed lean in the butt face, a deeper butt face and center section, longer center section and a fuller cushion. Furthermore, 3 had less fat below the butt face and over the forecushion. I recognize that 2 had a fuller heel and a larger degree of marbling in a slightly firmer butt face.

2/1 Greater trimness placed 2 over 1. 2 had less fat beneath the butt face along the rump end, over the forecushion, collar and displayed less seam fat in the butt face. Moreover, 2 possessed a wider butt face and center section. I realize that 1 had a deeper butt face, a longer, deeper center section and a fuller cushion. 1 also possesses more marbling in a more uniform colored, finer firmer textured lean.

1/4 In a very close placing advantages in quality and trimness placed 1 over 4. 1 had a higher degree of marbling in a more uniform colored, firmer, finer textured lean. In addition, 1 had less fat over the ham collar, forecushion and less seam fat in the butt face. 1 also possessed a deeper butt face and center section. I grant that 4 had a wider butt face and a wider, longer center section with less slightly less fat beneath the butt face and over the rump end.

4 I acknowledge that 4 was a heavily muscled ham but it placed last as it had the poorest of trimness in the class. 4 had more fat beneath the butt face and over the forecushion and would yield a lower percentage of closely trimmed center slices and placed last.