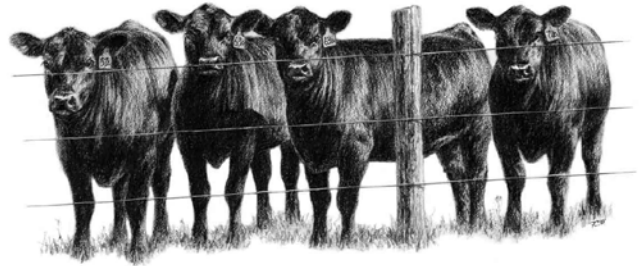


Timothy DelCurto

69796 Haefer Lane
Cove, Oregon
97824

Home: (541) 568-4401
Office: (541) 562-5129
Cell: (541) 910-5129
tim.delcurto@oregonstate.edu

Married: Tamara , 29yrs
Children: Hannah, 25 yr
Scott, 23 yr
Molly, 19 yr



A. EDUCATION AND EMPLOYMENT INFORMATION

EDUCATION

B.A. General Agriculture, Oregon State University, 1984
M.S. Animal Sciences, Oregon State University, 1986
Ph.D. Animal Sciences, Kansas State University, 1989

ACADEMIC POSITIONS

Graduate Research Assistant, Oregon State University, 1984-1986
Graduate Research Assistant, Kansas State University, 1986-1989
Assistant Professor, Eastern Oregon Agriculture Research Center, Burns Station, Department of Animal Sciences, Oregon State University, 1989 to 1994
Research Coordinator, Blue Mountain Natural Resource Institute, USDA Forest Service, La Grande PNW Research Station, 1994 to 1995
Associate Professor & Assistant Superintendent, Eastern Oregon Agricultural Research Center, Union Station, Department of Animal Sciences, Oregon State University, 1994 to 2004.
Associate Professor & Interim Superintendent, Eastern Oregon Agricultural Research Center, Burns & Union Station, Department of Animal Sciences, Oregon State University, 2004 to 2006.
Associate Professor & Superintendent, Eastern Oregon Agricultural Research Center, Burns & Union Station, Department of Animal Sciences, Oregon State University, 2006-2010.
Associate Professor, Director, and Program Head, Eastern Oregon Agriculture & Natural Resource Program, Burns & Union Stations, Department of Animal and Rangeland Sciences, 2010 to present.

B. TEACHING, ADVISING, RESEARCH, EXTENSION, AND OTHER ASSIGNMENTS

TEACHING

1. Credit Courses:

A. Principle Instructor:

Course No.	Title	Credit Hour	No. of Students	Term
ANS 121	Introductory Animal Sciences	4	26	W95
ANS 443	Beef Production Systems	4	11	W95
ANS 121	Introductory Animal Sciences	4	21	W96
ANS 443	Beef Production Systems	4	15	W96
ANS 121	Introductory Animal Sciences	4	28	W97
ANS 443	Beef Production Systems	4	15	W97
ANS 121	Introductory Animal Sciences	4	21	W98
ANS 443	Beef Production Systems	4	34	W98
ANS 315	Contemporary Issues in Animal Agric.	3	31	W99
ANS 443	Beef Production Systems	4	16	W99
ANS 121	Introductory Animal Sciences	4	34	W00
ANS 443	Beef Production Systems	4	18	W00

ANS 315	Contemporary Issues in Animal Agric.	3	35	W01
ANS 443	Beef Production Systems	4	13	W01
ANS 121	Introductory Animal Sciences	4	31	W02
ANS 443	Beef Production Systems	4	20	W02
ANS 121	Introductory Animal Sciences	4	31	W03
ANS 315	Contemporary Issues in Animal Agric.	3	32	W03
ANS 410	Animal Sciences Internship	1-3	5	F,W,S 03
ANS 444	Beef Production Systems	3	7	S03
ANS 121	Introductory Animal Sciences	4	34	W04
ANS 315	Contemporary Issues in Animal Agric	3	28	W04
ANS 121	Introductory Animal Sciences	4	45	W05
ANS 443	Beef Production Systems	3	33	W05
ANS 121	Introductory Animal Sciences	4	53	W06
ANS 315	Contemporary Issues in Animal Agric.	3	41	W06
ANS 317	Applied Animal Reproduction	1	15	S06
ANS 405	Reading & Conference	4	8	S06
ANS 410	Animal Sciences Internship	1-3	3	F,W,S 06
ANS 121	Introduction to Animal Sciences	4	73	W07
ANS 443	Beef Production Systems	3	46	W07
ANS 317	Applied Animal Reproduction	1	6	S07
ANS 405	Reading & Conference	4	7	S07
ANS 410	Animal Sciences Internship	1-3	3	F,W,S 07
ANS 121	Introductory Animal Sciences	4	57	W08
ANS 315	Contemporary Issues in Animal Agric.	3	47	W08
ANS 317	Applied Animal Reproduction	1	19	S08
ANS 410	Animal Sciences Internship	1-3	10	F,W,S 08
ANS 438	Exploring World Agric.	2	30	S08, F08
ANS 121	Introduction to Animal Sciences	4	36	W09
ANS 443	Beef Production Systems	3	47	W09
ANS 317	Applied Animal Reproduction	1	12	S09
ANS 410	Animal Sciences Internship	1-3	10	F,W,S 09
ANS 121	Introduction to Animal Sciences	4	54	W10
ANS 315	Contemporary Issues in Animal Agric.	3	38	W10
ANS 317	Applied Animal Reproduction	1	12	S10
ANS 410	Animal Sciences Internship	1-3	12	F, W, S, 10
ANS 121	Introduction to Animal Sciences	4	58	W11
ANS 443	Beef Production Systems	3	44	W11
ANS 317	Applied Animal Reproduction	1	23	S11
ANS 410	Animal Sciences Internship	1-12	5	F,W,S, 11
AG 410	Agricultural Sciences Internship	1-12	3	F,W,S, 11
AG 421	Leadership Development	3	15	S 11
ANS 121	Introduction to Animal Sciences	4	45	W12
ANS 315	Contemporary Issues in Animal Agric.	3	42	W12
ANS 317	Applied Animal Reproduction	1	18	S12
ANS 410	Animal Sciences Internship	1-12	8	F,W,S, 12
AG 410	Agricultural Sciences Internship	1-12	12	F,W,S, 12
AG 421	Leadership Development	3	23	S 12
ANS 317	Applied Animal Reproduction	1	17	S 13
ANS 410	Animal Sciences Internship	1-12	7	F,W,S 13
ANS 443	Beef Production Systems	3	53	W 13
RNG 421	Wildland Restoration Ecology	4	43	S 13
AED 518/599	Summer Agriculture Institute	3	16	S 13
ANS 121	Introduction to Animal Sciences	4	52	W14
RNG 442	Wildland Plant Animal Interactions	4	42	W14
ANS 317	Applied Animal Reproduction	1	18	S 14
ANS 410	EOLS Stockshow Internship	3	10	S 14
AED 518/599	Summer Agriculture Institute	3	17	S 14
AGRI 299	Current Issues in Agriculture	2	35	F 14
ANS 315	Contemporary Issues in Animal Agric.	3	38	F 14
ANS 121	Introduction to Animal Sciences	4	37	W 15
ANS 443	Beef Production Systems	3	33	W 15

ANS 317/599	Applied Animal Reproduction	1	15	S 15
AED 518	Summer Agriculture Institute	3	18	S 15
ANS 410	Animal Sciences Internship	1-12	6	F,W,S,15

B. Team Taught and/or Guest Instructor:

Course No.	Title	Credit Hour	No. of Students	Term
ANS 411/511	Ruminant Nutrition * Team taught with Drs Cheeke, Hu, and Carrol	3	NA	F92
ANS 215	Beef/Dairy Industries * Team taught with Hill, Swanson, and Carrol	3	NA	F96
ANS 215	Beef/Dairy Industries * Team taught with Paxton and Swanson	3	NA	F98
AG 405	Comparative World Agriculture	2	NA	F98
AG 405	Comparative World Agriculture * Team taught with Dr. Boyer (Horticulture), Dr. Lev (AREC), and Dr. Weber - traveled w/students in 1999 and 2000 to China	2	NA	F99
AG 405	Comparative World Agriculture - assisted with Dr. Diebel for Chile/Argentina trip	2	NA	S00
VM 714	Large Animal Block * Team taught with Ackerman and Bohnert	2	15	Summer 00
ANS 515	Research Techniques in Ruminant Nutrition	3	6	S01
ANS 515	Research Techniques in Ruminant Nutrition *team taught with Ackerman, Bohnert, Pulsipher, and French	3	9	S02
ANS 515	Research Techniques in Ruminant Nutrition *team taught with French, Bohnert, and Mueller	3	6	S05
ANS 515	Research Techniques in Ruminant Nutrition *Taught as a 2 week modular course at the EOARC Union Station. **team taught with Bohnert, Mueller and DelCurto	5	8	S,F08
ANS 515	Research Techniques in Ruminant Nutrition *Taught as a 2 week modular course at the EOARC Union Station. **team taught with Bohnert, Cooke, Mueller and DelCurto	5	6	S/F 11
RNG 490	Range Management Planning *team taught with Limb, Kennedy, and DelCurto	4	45	S 12
CSS 310	Pastures and Forages *team taught with Hawks and DelCurto	4	15	S 13
CSS 310	Pastures and Forages *team taught with Hawks and DelCurto	4	18	S 14
RNG 490	Range Management Planning *team taught with Morris and DelCurto	4	22	S 14
ANS 515	Research Techniques in Ruminant Nutrition	5	6	S 14
CSS 310	Pastures and Forages *team taught with Hawks and DelCurto	4	28	S 15
RNG 490	Range Management Planning *team taught with Morris, Endress, and DelCurto	4	12	S 15

C. Other Assignments:

1. **Exploring World Agriculture:** provided the lead for OSU Students at Eastern Oregon University (EOU) to study a region of the world (2 credit course) and optional tour of that country. I organized the EOU portion of the class that resulted in two trips to China, one trip to British Columbia/Alberta, and assisted with two courses that resulted in trips to Chili and Argentina.
2. The Eastern Oregon Agricultural Research Center has host the **Summer Agriculture Institute** for the past 15 years. This is a one week short course in July that provides 3 graduate level credits for teachers (K through 12) that have little or no background in Agriculture and Natural Resource Industries. The course is funded in large part by industry donations with the Oregon Farm Bureau Agricultural Education Foundation being one of the biggest contributors. In addition to being the superintendent/director of the Agricultural Research Center during this time period, I have served as the lead instructor for this course for the past 6 years.

C. SCHOLARSHIP AND CREATIVE ACTIVITY

1. Peer Reviewed Publications (69)

Refereed Journal Articles (47)

- DelCurto, T., D.W. Weber and A.M. Craig. 1989. Administration of lasalocid in a self-fed mineral carrier or hand-fed three times weekly to stocker cattle on pasture. *Nutr. Rep. Int'l.* 39(4):773.
- Cochran, R.C., E.S. Vanzant and T. DelCurto. 1989. Evaluation of internal markers isolated by alkaline hydrogen peroxide incubation and acid detergent lignin extraction. *J. Anim. Sci.* 66:3245.
- DelCurto, T., R.C. Cochran, D.L. Harmon, A.A. Beharka, K.A. Jacques, G. Towne and E.S. Vanzant. 1990. Supplementation of dormant, tallgrass-prairie forage. 1. Influence of varying supplemental protein and(or) energy levels of forage utilization characteristics in confinement. *J. Anim. Sci.* 68:515.
- DelCurto, T., R.C. Cochran, L.R. Corah, A.A. Beharka, E.S. Vanzant and D.E. Johnson. 1990. Supplementation of dormant, tallgrass-prairie forage. 2. Performance and forage utilization characteristics in grazing beef cattle receiving supplements of different protein concentrations. *J. Anim. Sci.* 68:532.
- Vanzant, E.S., R.C. Cochran, K.A. Jacques, A.A. Beharka, T. DelCurto and T.B. Avery. 1990. Influence of grain supplementation of fresh early-summer bluestem-range grass of forage intake and utilization by beef steers. *J. Anim. Sci.* 68:1457.
- DelCurto, T., R.C. Cochran, T.G. Nagaraja, L.R. Corah, A.A. Beharka and E.S. Vanzant. 1990. Influence of physical form of supplemental protein on beef cattle performance, grazing behavior, ruminal microbial population, and the utilization of dormant, tallgrass-prairie forage. *J. Anim. Sci.* 68:2901.
- Brandyberry, S. D., R. C. Cochran, E. S. Vanzant, T. DelCurto and L. R. Corah. 1991. Influence of supplementation method on forage use and grazing behavior by beef cattle grazing bluestem range. *J. Anim. Sci.* 69:4128.
- Albro, J. D., D. W. Weber and T. DelCurto. 1993. Comparison of whole raw soybeans, extruded soybeans or soybean meal/barley on digestive characteristics and performance of weaned beef steers consuming mature grass hay. *J. Anim. Sci.* 71:26.
- Stamm, M. M., T. DelCurto, M. R. Horney, S. D. Brandyberry, and R. K. Barton. 1994. Influence of alkaloid concentration of tall fescue straw on the nutrition, physiology and subsequent performance of beef steers. *J. Anim. Sci.* 72:1068.
- Horney, M. R., **T. DelCurto***, M. M. Stamm, R. K. Barton and S. D. Brandyberry. 1996. Early-vegetative meadow hay versus alfalfa hay as a supplement for cattle consuming low-quality roughages. *J. Anim. Sci.* 74:1959.
- Weder, C. E., **T. DelCurto***, T. Svejcar, J. Jaeger, A. Earley, and R. K. Bailey. 1999. Influence of supplemental alfalfa quality on the intake, utilization, and, subsequent performance of beef cattle consuming low-quality roughages. *J. Anim. Sci.* 77:1256.

- Riggs, R. A., A. R. Tiedemann, J. G. Cook, T. M. Ballard, P. J. Edgerton, M. Vavra, W. C. Krueger, F. C. Hall, L. D. Bryant, L. L. Irwin, and **T. DelCurto**. 2000. Modification of mixed conifer forests by ruminant herbivores in the Blue Mountains ecological province. USDA Forest Service Res. Pap. PNW-RP-527.
- DelCurto[#], T.**, K. C. Olson, B. Hess and E. Huston. 2000. Optimal supplementation strategies for beef cattle consuming low-quality forages in the Western United States. J. Anim. Sci. Symposium Paper Web Site .
- Bohnert, D. W., C. S. Schauer, M. L. Bauer, and **T. DelCurto**. 2002. Influence of rumen protein degradability and supplementation frequency on steers consuming low-quality forage: I. Site of digestion and microbial efficiency. J. Anim. Sci. 80:2967-2977.
- Bohnert, D. W., C. S. Schauer, S. J. Falck, and **T. DelCurto**. 2002. Influence of rumen protein degradability and supplementation frequency on steers consuming low-quality forage: II. Ruminal fermentation characteristics. J. Anim. Sci. 80:2978-2988.
- Bohnert, D. W., C. S. Schauer, **T. DelCurto**. 2002. Influence of rumen protein degradability and supplementation frequency on performance and nitrogen use in ruminants consuming low-quality forage: Cow performance and efficiency of nitrogen use in wethers. J. Anim. Sci. 80:1629-1637.
- Porath, M. L., P.A. Momont, **T. DelCurto***, N. R. Rimbey, J. A. Tanaka, and M. McInnis. 2002. Offstream water and trace mineral salt as management strategies for improved cattle distribution. J. Anim. Sci. 80:346-356.
- Parsons, C. T., P. A. Momont, **T. DelCurto***, and J. L. Sharp. 2003. Effect of Season of Use on Beef Cattle Distribution Patterns in Riparian Areas. J. Range Manage. 56:334-341.
- Stillings, A. M., J. A. Tanaka, N. R. Rimbey, **T. DelCurto**, P. A. Momont, and M. L. Porath. 2003. Economic implications of off-stream water developments to improve riparian grazing. J. Range Manage. 56:418-424.
- Cook, J. G., B. K. Johnson, R. C. Cook, R. A. Riggs, **T. DelCurto**, L. D. Bryant, and L. L. Irwin. 2004. Effects of summer-autumn nutrition and parturition date on reproduction and survival of elk. Wildlife monographs. NO. 155:1-61.
- Fisher, M. J., D. W. Bohnert, C. J. Ackerman, C. S. Schauer, **T. DelCurto**, A. M. Craig, E. S. Vanzant, D. L. Harmon, and F. N. Schrick. 2004. Evaluation of perennial ryegrass straw as a forage source for ruminants. J. Anim. Sci. 82:2175-2184.
- DelCurto[#], T.**, M. Porath, C. T. Parsons, and J. A. Morrison. 2005. Management strategies for sustainable beef cattle grazing on forested rangelands in the Pacific Northwest. Invited synthesis paper. J. Range Ecol. Manage. 58:119-127.
- Vavra, M., K. Walburger, and **T. DelCurto**. 2005. Ungulate ecology of Ponderosa Pine ecosystems. USDA Forest Service Gen. Tech. Rep. PSW-GTR.
- Daalkhalijav, D., **T. DelCurto***, D. E. Johnson, S. L. Findholt, and B. K. Johnson. 2006. Estimating shrub forage yield and utilization using a photographic technique. Northwest Science 80:259-263.
- Walburger, K. J., **T. DelCurto***, and M. Vavra. 2007. Influence of forest management and previous herbivory on cattle diets. Rangeland Ecology and Management 60:172-178.
- John A. Tanaka, Neil R. Rimbey L. Allen Torell, David "Tex" Taylor, Derek Bailey, **Timothy DelCurto**, Kenric Walburger, and Bob Welling. 2007. Grazing distribution: The quest for the silver bullet. Rangelands (August): 38-46.
- Damiran, D., **T. DelCurto***, D. W. Bohnert, and S. L. Findholt. 2008. Comparison of Techniques and Grinding Size to Estimate Digestibility of Forage Based Ruminant Diets. J. Anim. Feed Sci. and Technology 141:15-35.
- K. J. Walburger, **T. DelCurto***, G. D. Pulsipher, R. L. Hathaway, and G. J. Pirelli. 2008. The Effect of Fertilizing Forage with Sodium Selenate on Selenium Concentration of Hay, Drain Water and Serum Selenium Concentrations in Beef Heifers and Calves. Can. Journ. of Ani. Sci. 88 (1): 79-83.
- J. R. Jaeger, K. C. Olson, **T. DelCurto***, and A. Qu. 2008. Case Study: Pattern of Parturition as Affected by Time of Feeding and Prediction of the Time of Day that Parturition Will Occur in Spring-Calving Beef Cows. Prof. Anim. Scientists 24:247-253.

- Kenric J. Walburger, Micah Wells, Martin Vavra, **Timothy DelCurto***, Bruce Johnson, and Pricilla Coe. 2009. Influence of Cow Age on Grazing Distribution in a Mixed Conifer Forest. *Rangeland Ecology and Management* 62:290-296.
- Bohnert, D.W., **T. DelCurto**, A.A. Clark, M.L. Merrill, S.J. Falck, and D.L. Harmon. 2011. Protein Supplementation of Ruminants Consuming Low-Quality Cool- or Warm-Season Forage: Difference in Intake and Digestibility. *Journal of Animal Science* 2011, 89:3707-3717.
- Johnson, T. N., P. L. Kennedy, **T. DelCurto** and R. V. Taylor. 2011. Bird community responses to cattle stocking rates in a Pacific Northwest bunchgrass prairie. *Agriculture, Ecosystems & Environment* 144:338-346.
- Cooke, R., D. Bohnert, B. Cappelozza, C.J. Mueller, and **T. DelCurto**. 2012. Effects of temperament and acclimation to handling on reproductive performance of *Bos Taurus* beef females. *J. Anim. Sci.*[†] 90:3547-3555.
- Jaeger, J.R., and T. DelCurto*. 2012. Endogenous prostaglandin F2a concentrations in bovine whole semen, seminal plasma and extended semen. *Theriogenology*. 78:369-375.
- Kimoto, C., S. J. DeBano, R. W. Thorp, R. V. Taylor, H. Schmalz, T. DelCurto, T. Johnson, P. L. Kennedy, S. Rao. 2012. Short-Term Responses of Native Bees to Livestock and Implications for Managing Ecosystem Services in Grasslands. *Ecosphere* 3(10):88.
- Clark, A., **T. DelCurto***, M. Vavra, and B. L. Dick. 2013. Influence of Stocking Rate and Fuels Reduction on Beef Cattle Diet, Composition, and Quality. *Rangeland Ecology and Management*. 66:714 -720.
- Damiran, D., **T. DelCurto***, S. Findholt, B. Johnson, and M. Vavra. 2013. Comparison of Bite-Count and Rumen Evacuation Techniques to Estimate Diet Quantity and Quality in Grazing Cattle. *Rangeland Ecology and Management*. 66:106-109.
- Darambazar, E., **T. DelCurto***, and D. Damiran. 2013. Changes in Forage Quantity and Quality with Continued Late-Summer Cattle Grazing a Riparian Pasture in Eastern Oregon of United States. *Sustainable Agriculture Research* 2 (4): 64-76.
- Peterson, M. K., C. J. Mueller, J. T. Mulliniks, A. J. Roberts, T. DelCurto, and R. C. Waterman. 2014. Potential limitations of NRC in predicting energetic requirements of beef females within western U.S. grazing systems. *J. Anim. Sci.*[‡] 92(7):2800-2808.
- Darambazar, E., **T. DelCurto***, and D. Damiran. 2014. The Influence of Cow Age on Botanical Composition of Diets in Mountain Riparian Areas in Eastern Oregon of United States. *Sustainable Agriculture Research*. 3: (1) 1-9.
- Cooke, R. F., D. W. Bohnert, B. I. Cappelozza, R. S. Marques, T. DelCurto, and C. J. Muller. 2014. Incorporation of sexed semen into reproductive management of cow-calf operations. *J. of Livestock Science*. 163:165-171.
- Riggs, R. A., R. E. Keane, M. Cimon, R. Cook, L. Holsinger, J. Cook, T. DelCurto, L. S. Baggett, D. Justice, D. Powell, M. Vavra, B. Naylor. 2015. Biomass and fire dynamics in a temperate forest-grassland mosaic: Integrating multi-species herbivory, climate, and fire with the FireBGGv2/GrazeBGC system. *Ecological Modelling*. 296:57-78.
- Roever, C. L., T. DelCurto*, M. Rowland, M. Vavra and M. Wisdom. 2015. Cattle grazing in semiarid forestlands: Habitat selection during periods of drought. *Journal of Animal Science*. 93(6): 3212-3225.
- Roever, C. L., M. Wisdom, M. Rowland, M. Vavra, and T. DelCurto*. 2015. Integrating temporal dynamics in habitat selection models. *Ecological Modelling*. Submitted
- Vavra, M., T. DelCurto, N. Rimbey, and R. Kay. 2015. Ecological impacts of season of use on Sagebrush-Steppe Grasslands. *Journal of Rangeland Applications*. In press.
- Averett, J. P., B. McCune, C. G. Parks, B. J. Naylor, T. DelCurto*, and R. Mata-Gonzalez. 2015. Intra- and Inter-annual vegetation change along an elevation gradient in the Willowa Mountains, Oregon. *Northwest Science*. Submitted.

Averett, J. P., B. McCune, C. G. Parks, B. J. Naylor, T. DelCurto*, and R. Mata-Gonzalez. 2015. Non-native Plant Invasion along Elevation and Canopy Closure Gradients in a Middle Rocky Mountain Ecosystem. Plos One. Submitted.

* *Graduate student or Post Doctorate supervised or co-supervised by candidate*

Papers resulting from invited presentations national or international meetings

Publication in Preparation (6)

Wyffels, S. A., T. DelCurto*, A. A. Clark, P. Kennedy, R. V. Taylor, and S. J. Debano. 2015. Influence of Stocking Density on Beef Cattle Performanc and Grazing Behavior on Native Bunchgrass Prairie. Journal of Range Management. In preparation.

Damiran D., T. DelCurto*, S. L. Findholt, B. K. Johnson, and M. Vavra. 2015/16. Effects of early summer cattle or elk grazing on foraging dynamics of cattle, deer and elk on mixed-conifer rangelands in late summer. J. of Animal Sci. In preparation.

DelCurto, T., S. A. Wyffels, C. J. Mueller, D. Damiran, E Darambazar, M. Vavra, and R. A. Riggs. 2015/16. The Influence of Habitat Type on Vegetation Quality in Mixed-Conifer Forested Rangelands. Rangeland Ecology and Management. In preparation.

DelCurto, T., S. A. Wyffels, C. J. Mueller, D. Damiran, E Darambazar, M. Vavra, and R. A. Riggs. 2015/16. The Influence of Habitat Type and Overstory on Understory Vegetation Quality in Mixed-Conifer Forested Rangelands. Rangeland Ecology and Management. In preparation.

Wyffels, S. A., **T. DelCurto***, J. Averett, and A. A. Clark. 2015/16. Influence of Beef Cattle Stocking Density on Utilization and Stubble Height of Native Bunchgrass Prairie. Rangeland Ecology and Management. In preparation

Clark, A. A., **T. DelCurto***, S. A. Wyffels, C. J. Mueller, and G. L. Tschida. 2015. The Influence of Lactation on Botanical Composition, Diet Quality, and Grazing Behavior of Cattle Grazing Native Bunchgrass Prairie. Rangeland Ecology and Management. In preparation.

* *Graduate student supervised or co-supervised by candidate*

Books and Book Chapters (5):

Turner, H. A. and **T. DelCurto**. 1991. Nutritional and managerial considerations for range beef cattle production. In: J. Maas (Ed.) Veterinary Clinics of North America : Food Animal Practice, Beef Cattle Nutrition. W. B. Saunders Co., Philadelphia. pp. 95-125.

DelCurto, T., D. Bohnert, and C. Ackerman. 2000. Characteristics and challenges of sustainable beef production in western US. In: Strategic Supplementation of Beef Cattle Consuming Low-Quality Roughages in the Western United States. Oregon State Univ. Agri. Exp. Sta. SB 683.

DelCurto, T. and P. R. Cheeke. 2005. Feeding and nutrition of beef cattle. In: P.R. Cheeke (Ed.) Applied Animal Nutrition; Feed and Feeding (3rd edition). Prentice-Hall, Inc. pp 373-397.

Putman, D. H., and **T. DelCurto**. 2005. Forage systems for Arid Zones. In: R. F. Barnes, C. J. Nelson, K. J. Moore, and M. Collins (Eds) Forages, Volume II. The Science of Grassland Agriculture (6th edition). Iowa State Press, Chapt. 22 pp 323-339.

DelCurto, T. 2010. Issues in Grazing Livestock Nutrition. In: Proc. 4th Grazing Livestock Nutrition Conference. B. W. Hess, T. DelCurto, J.G.P. Bowman, and R. C. Waterman (Eds).West. Sect. Am. Soc. Anim. Sci., Champaign, Il pp 1-10.

Other Peer-reviewed Articles and Publications (11):

- DelCurto, T.** 1997. Management of beef cattle for economic sustainability: A focus on the winter feeding period. 32nd Annual PNW Nutrition Conference, Boise, ID.
- DelCurto, T.,** and K. Olson. 1999. Optimal supplementation strategies with beef cattle consuming low-quality roughages. Proc. Intermountain Cow Symposium, Twin Falls, ID.
- Bohnert, David, and **Tim DelCurto.** 1999. Fundamentals of supplementing low-quality forage. CL317. In: J. R. Adams (Ed.) Cow-Calf Management Guide and Producer's Library (2nd edition). University of Idaho, Moscow.
- Bohnert, David, **Tim DelCurto,** and Ed Huston. 1999. Supplementation strategies for beef cattle consuming low-quality forage. CL318. In: J. R. Adams (Ed.) Cow-Calf Management Guide and Producer's Library (2nd edition). University of Idaho, Moscow.
- DelCurto, T.,** M. Porath, M.L. McInnis, P. Momont, and C. Parsons. 1999. Management strategies for optimal beef cattle distribution and use of mountain riparian meadows. K. Launchbaugh (Ed.). Proc. Pacific Northwest Range Shortcourse, Moscow, ID.
- DelCurto, T.,** C. Yoder, and B. Fontaine. 2000. Utilizing grass seed residues for wintering beef cattle. Proc. Canadian Alfalfa Seed and Forage Seed Conf. Pp. 62-67.
- DelCurto, T.** 2002. Alternative sources of supplemental nutrients for beef cow/calf production. 2002. Proc. Inter. Mountain Nutr. Conf. 4th Annual Meet. Pp 107-128.
- DelCurto, T.,** and M. L. Porath. 2003. Rangeland water resources and sustainable grazing management strategies for the Western US. Colorado Nutrition Roundtable sponsored by the NE, WY, and CO Chapt. of ARPAS. Sect. E:1-22.
- Bohnert, D. W., C. W. Hunt, and **T. DelCurto.** 2003. Grass seed straw – Considerations for use as a forage source for ruminants. M. L. Estridge (Ed.). Proc. 3rd National Symp. On Alternative Feeds for Livestock and Poultry. Pp. 39-50.
- Findholt, S. L., B. K. Johnson, D. Daalkhaijav, and **T. DelCurto.** 2004. Diet composition, dry matter intake, and diet overlap of mule deer, elk, and cattle. Proc. of the North Amer. Wildlife and Nat. Res. Conf.
- Findholt, S. L., B. K. Johnson, D. Damiran, T. DelCurto, and J.. G. Kie. 2005. In M. J. Wisdom (Ed); The Starkey Project: a synthesis of long-term studies of elk and mule deer. Alliance Comm. Group. Lawrence, KS, USA. Pp 159-170.

Non-refereed Journal Articles or Outreach Publications, etc.

- DelCurto, T.,** W. Nichols, D. Cambell and D.W. Weber. 1987. Use of ionophores in commercial beef cattle production. Beef Cattle Day, Agric. Exp. Sta. Special Rep.
- DelCurto, T.,** R.C. Cochran, K.A. Jacques, D.L. Harmon, G. Towne, T.B. Avery and E.S. Vanzant. 1987. Effect of supplemental protein:energy ratio on the intake, digestibility, fill and turnover of dormant bluestem range-grasses. Kansas Agric. Exp. Sta., Rep. of Progress 514.
- DelCurto, T.,** R.C. Cochran and L.R. Corah. 1988. Influence of supplemental protein concentration on the performance of beef cows grazing dormant bluestem range. Kansas Agric. Exp. Sta., Rep. of Progress 539.
- DelCurto, T.,** R.C. Cochran, T.B. Avery and A.A. Beharka. 1988. Influence of supplemental protein versus energy level on intake, fill, passage, digestibility and fermentation characteristics of beef steers consuming dormant bluestem range forage. Kansas Agric. Exp. Sta., Rep. of Progress 539.
- Cochran, R.C., G. Kuhl, **T. DelCurto,** L.R. Corah and E.S. Vanzant. 1988. Limit versus full creep for calves grazing late summer bluestem. Kansas Agric. Exp. Sta., Rep. of Progress 539.

- Cochran, R.C., C.E. Binns, L.R. Corah, **T. DelCurto** and E.S. Vanzant. 1989. Limit versus full creep-feeding of a high protein supplement to calves grazing late summer bluestem. *Kansas Agric. Exp. Sta., Rep. of Progress 567.*
- Sunvold, G.D., R.C. Cochran, E.S. Vanzant, S.D. Brandyberry, R.B. Hightshoe and **T. DelCurto**. 1989. Evaluation of wheat middlings as a supplement for cattle consuming winter range forage. *Kansas Agric. Exp. Sta., Rep. of Progress 567.*
- DelCurto, T.**, R.C. Cochran, L.R. Corah, A.A. Beharka and E.S. Vanzant. 1989. Influence of supplemental protein concentration on intake, utilization and quality of diet selected by steers grazing dormant, tallgrass-prairie forage. *Kansas Agric. Exp. Sta., Rep. of Progress 567.*
- DelCurto, T.**, R.C. Cochran, T.G. Nagaraja, A.A. Beharka and E.S. Vanzant. 1989. Soybean meal/sorghum grain, alfalfa hay, and dehydrated alfalfa pellets as protein sources for steers fed dormant, native tallgrass forage in drylot. *Kansas Agric. Exp. Sta., Rep. of Progress 567.*
- DelCurto, T.**, R.C. Cochran, L.R. Corah and E.S. Vanzant. 1989. Soybean meal/sorghum grain, alfalfa hay and dehydrated alfalfa pellets as protein supplements for beef cows grazing dormant, tallgrass-prairie. *Kansas Agric. Exp. Sta., Rep. of Progress 567.*
- Brandyberry, S. D., R. C. Cochran, E. S. Vanzant, **T. DelCurto**, J. E. Schneider and L. R. Corah. 1990. Influence of supplementation method on forage use and grazing behavior of beef cattle grazing bluestem range. *Kansas Agric. Exp. Sta., Rep. of Progress 592.*
- DelCurto, T.** 1990. Supplementation of poor quality roughages: Review Article. *Oregon Agric. Exp. Sta. Special Rep. 853.*
- DelCurto, T.**, R. Angell, R. Barton and J. Rose. 1990. Alfalfa supplementation of beef cattle grazing winter sagebrush-steppe range forage. *Oregon Agric. Exp. Sta. Special Rep. 853.*
- DelCurto, T.**, R. K. Barton, P. R. Cheeke and H. A. Turner. 1991. Ammoniation and(or) supplementation of tall fescue straw for beef cattle production. *Oregon Agric. Exp. Sta. Special Rep. 878.*
- Albro, J. D., D. W. Weber and **T. DelCurto**. 1991. The use of soybean protein supplements with low quality roughage for growing beef calves. *Oregon Agric. Exp. Sta. Special Rep. 878.*
- DelCurto, T.**, S. D. Brandyberry, R. K. Barton and R. F. Angell. 1991. Alfalfa supplementation of beef cattle grazing winter sagebrush-steppe range forage. *Oregon Agric. Exp. Sta. Special Rep. 878.*
- DelCurto, T.**, M. M. Stamm, M. R. Horney and R. K. Barton. 1991. Utilizing grass seed residues as a winter feedstuff for beef cattle. *Oregon Agric. Exp. Sta. Special Rep. 878.*
- Chamberlain, D. and **T. DelCurto**. 1991. Use of grass seed residues as a winter feed resource for beef cattle. *Eastern Oregon Agric. Res. Center Circ. of Info. No. 2.*
- DelCurto, T.**, R. A. Angell, R. K. Barton, J. A. Rose and S. C. Bennett. 1991. Alfalfa supplementation of beef cattle grazing winter sagebrush-steppe range forage. *Oregon Agric. Exp. Sta. Special Rep. 880.*
- Stamm, M. M., **T. DelCurto**, M. R. Horney, K. H. Brandyberry and R. K. Barton. 1993. Nutritional quality of grass seed residues harvested for livestock feed in western Oregon. *Oregon Agric. Exp. Sta. Special Rep. 923.*
- Stamm, M. M., **T. DelCurto**, M. R. Horney, S. D. Brandyberry and R. K. Barton. 1993. Influence of alkaloid concentration of tall fescue straw on the nutrition, physiology and subsequent performance of beef steers. *Oregon Agric. Exp. Sta. Special Rep. 923.*
- Horney, M. R., **T. DelCurto**, M. M. Stamm, R. K. Barton and S. D. Brandyberry. 1993. Early-vegetative meadow hay versus alfalfa hay as a supplement for cattle consuming low-quality roughages. *Oregon Agric. Exp. Sta. Special Rep. 923.*
- Barton, R. K., **T. DelCurto**, S. D. Brandyberry, M. M. Stamm and M. R. Horney. 1993. Physical modification and(or) supplementation strategies to improve the feeding value of tall fescue straw for beef cattle. *Oregon Agric. Exp. Sta. Special Rep. 923.*

- Brandyberry, S. D., **T. DelCurto** and R. A. Angell. 1993. Physical form and frequency of alfalfa supplementation for beef cattle winter grazing northern Great Basin rangelands. Oregon Agric. Exp. Sta. Special Rep. 923.
- DelCurto, T.**, R. K. Barton, K. H. Brandyberry and S. D. Brandyberry. 1993. Influence of frequency of alfalfa supplementation on the intake and use of tall fescue straw. Oregon Agric. Exp. Sta. Special Rep. 923.
- Fajemisin, B., **T. DelCurto**, M. Vavra and D.G. Ganskopp. 1993. Potential of goats as brush control agents. Oregon Agric. Exp. Sta. Special Rep. 923.
- Brandyberry, S. D., **T. DelCurto**, R. K. Barton, K. J. Paintner. 1993. Effects of early spring grazing of rangelands used in winter grazing programs in the northern Great Basin. Oregon Agric. Exp. Sta. Special Rep. 923.
- Brandyberry, S. D., **T. DelCurto**, R. K. Barton, K. H. Brandyberry, and K. J. Paintner. 1993. Environmental influences on nutritional physiology and performance of beef cattle winter grazing northern great basin rangelands. Oregon Agric. Exp. Sta. Special Rep. 923.
- Brandyberry, S. D., **T. DelCurto**, R. K. Barton, and J. A. Rose. 1993. Year and season effects on diet quality of beef cattle grazing northern Great Basin rangelands. Oregon Agric. Exp. Sta. Special Rep. 923.
- Angell, R. A., **T. DelCurto**, and R. K. Barton. 1994. Fall defoliation of bluebunch wheatgrass: Tiller growth and development. Oregon Agric. Exp. Sta. Special Rep. 935.
- Brandyberry, S. D., **T. DelCurto** and R. A. Angell. 1994. Winter grazing as a grazing management program for northern Great Basin Rangelands. Oregon Agric. Exp. Sta. Special Rep. 935.
- Angell, R. A. R. K. Barton, and **T. DelCurto**. 1995. Energy supplementation for cattle grazing native meadows. Oregon Agric. Exp. Sta. Special Rep. 948.
- DelCurto, T.**, T. M. Tibbs, R. K. Barton. 1995. The influence of physical modification and supplementation strategies of grass seed straw on beef cattle intake, feed efficiency, and performance. Oregon Agric. Exp. Sta. Special Rep. 948.
- DelCurto, T.**, C. Weder, T. Svejcar, R. K. Barton and A. Earley. 1995. The influence of supplemental alfalfa quality on the intake and utilization of low-quality roughage by beef cattle with varying levels of protein requirements. Oregon Agric. Exp. Sta. Special Rep. 948.
- Tibbs, T. M., **T. DelCurto**, M. McInnis, A. R. Tiedemann, and T. M. Quigley. 1995. Influence of electronic diversion from riparian areas on livestock grazing behavior, nutritional physiology, stress physiology and performance. Oregon Agric. Exp. Sta. Special Rep. 951.
- DelCurto, T.**, and M. Vavra. 1997. Management of beef cattle for economic sustainability: A review of research. Oregon Agric. Exp. Sta. Special Rep. 979.
- Dickard, M. L., P. A. Momont, **T. DelCurto**, N. R. Rimbey, J. A. Tanaka, and M. McInnis. 1998. Offstream water and salt as management strategies for improved cattle distribution and subsequent riparian health. Oregon Agric. Exp. Sta. Special Rep. 991.
- Weder, C. E., **T. DelCurto**, T. Svejcar, J. Jaeger, A. Earley, and R. K. Bailey. 1998. Influence of supplemental alfalfa quality on the intake, use, and, subsequent performance of beef cattle consuming low-quality roughages. Oregon Agric. Exp. Sta. Special Rep. 991.
- Jaeger, J. R., F. Stormshak, **T. DelCurto**, and K. Fite. 1998. Melatonin to induce puberty in virgin heifers. Oregon Agric. Exp. Sta. Special Rep. 991.
- Jaeger, J. R., K. Fite, and **T. DelCurto**. 1998. Postpartum prostaglandin administration before estrus synchronization to improve first service conception rate and pregnancy rate. 1998. Oregon Agric. Exp. Sta. Special Rep. 991.
- Jaeger, J. R., K. Fite, and **T. DelCurto**. 1998. Evaluation of days postpartum on efficacy of estrus synchronization and artificial insemination. Oregon Agric. Exp. Sta. Special Rep. 991.

- DelCurto, T.**, A. V. Earley, T. May and W. T. Nichols. 1998. Comparison of bambarmycins, lasalocid and monensin on the nutritional physiology of beef cattle consuming forage or concentrate base diets. Oregon Agric. Exp. Sta. Special Rep. 991.
- DelCurto, T.** H. A. Turner, and R. Slater. 1998. Comparison of biuret, cottonseed meal, and corn gluten meal barley mixtures as supplements for prepartum beef cattle consuming tall fescue straw. Oregon Agric. Exp. Sta. Special Rep. 991.
- Bohnert, D., **T. DelCurto**, and E. Huston. 1999. Supplementation strategies for beef cattle consuming low-quality forage. Cattlemen's Library 317.
- Bohnert, D., and **T. DelCurto**. 1999. Fundamentals of Supplementing low-quality forages. Cattlemen's Library 318.
- Vavra, M., **T. DelCurto**, and M. M. McInnis. 2000. Designing sustainable livestock grazing Systems. Oregon Agric. Exp. Sta. Spec. Rep. 1018:1-7.
- DelCurto, T.**, D. Bohnert, and C. Ackerman. 2000. Characteristics and Challenges of the Beef Cattle Industry in the Western US. Oregon Agric. Exp. Sta. Spec. Rep. 1018:8-16.
- Parsons, C. T., P. A. Momont, **T. DelCurto**, and J. L. Sharp. 2000. Effects of season of use on beef cattle distribution patterns and subsequent vegetation use in mountain riparian areas. Oregon Agric. Exp. Sta. Spec. Rep. 1018:17-24.
- Walburger, K. **T. DelCurto**, M. Vavra, L. Bryant, and J. G. Kie. 2000. Influence of a grazing system and aspect, north vs. south, on the nutritional quality of forages, and performance and distribution of cattle grazing forested rangelands. Oregon Agric. Exp. Sta. Spec. Rep. 1018:36-41.
- DelCurto, T.**, B. K. Johnson, M. Vavra, A. A. Ager, and P. K. Coe. 2000. The influence of season on distribution patterns relative to water and resource use by cattle grazing mixed forested rangelands. Oregon Agric. Exp. Sta. Spec. Rep. 1018:42-48.
- DelCurto, T.**, D. Bohnert, and C. Ackerman. 2000. Characteristics and challenges of the beef cattle industry in the western US. Oregon Agric. Exp. Sta. Spec. Bull. (in press).
- DelCurto, T.** and K. C. Olson. 2000. Physical form of protein for supplementation of low-quality roughages. Oregon Agric. Exp. Sta. Spec. Bull. (in press).

Special Reports and Station Bulletins: *Publications that I served as either the editor for or provided components of topical reviews for issues important to the regional livestock industry.*

- Eastern Oregon Agricultural Research Center Annual Report. 1993. Served as editor for 1993 annual report. Oregon Agric. Exp. Sta. Spec. Rep. 923.
- Feeding Oregon's grass straw to livestock: Economic and nutritional considerations. 1995. Collaborative publication among Agricultural Resource Economics faculty (Brenda Turner, Frank Conklin and Tim Cross) and Animal Sciences faculty (Diane Carroll and Tim DelCurto) to address the economic and nutritional consideration of feeding straws to livestock. Oregon Agric. Exp. Sta. Spec. Rep. 952 .
- Oregon Feed Library. 1998. Worked as a team member on cataloging a cross section of Oregon Forages. Project involved sampling numerous forages, conducting wet chemistry in laboratories (Burns, Union, and Corvallis) and outreach programs to take information to the producers. Worked with Diane Carrol, Ron Hathaway and Mark Keller.
- Western Coordinating Committee 110. 2000. T. DelCurto (ed). Supplementation of Low-quality roughages in the Western US: Collection of articles on research conducted in the west and specific to western production systems as prepared by WCC 110 members. 2000. Oregon Agric. Exp. Sta. Bull. (In press).

Range Field Day Report 2000. T. DelCurto (ed). Sustainable Livestock Production in Forested and Intermountain Rangelands. Topical publication corresponding to the Field Day held at the OSU Hall Ranch of the EOARC Union Station. Oregon Agric. Exp. Sta. Spec. Rep. 1018.

EOARC Union Station. 2001. T. DelCurto and M. Vavra (eds). The History of the Eastern Oregon Agricultural Research Center's Union Station: 100 Years of Service. Oregon Agric. Exp. Sta. Spec. Rep. (in preparation).

Abstracts and Proceedings

- DelCurto, T.,** R.C. Cochran, K.A. Jacques, D.L. Harmon, G. Towne, T.B. Avery and E.S. Vanzant. 1987. Effect of protein concentration in supplemental feed on the intake, digestibility, fill and passage of dormant bluestem range forage. *J. Anim. Sci.* 65 (Suppl.1):336.
- DelCurto, T.,** R.C. Cochran and T.B. Avery. 1988. Influence of supplemental protein versus energy level on intake, fill, passage, digestibility and fermentation characteristics of beef steers consuming dormant bluestem range-forage. *J. Anim. Sci.* 66(Suppl.1):164.
- DelCurto, T.,** R.C. Cochran, L.R. Corah, A.A. Beharka, E.S. Vanzant and T.B. Avery. 1988. Influence of supplemental protein concentration on the intake, utilization and performance of beef cattle grazing dormant bluestem range. *J. Anim. Sci.* 66(Suppl.1):312.
- Vanzant, E.S., R.C. Cochran, T.B. Avery, **T. DelCurto** and A.A. Beharka. 1988. Influence of supplemental grain type on utilization of early-summer bluestem range grass in beef steers. *J. Anim. Sci.* 66(Suppl.1):342.
- Beharka, A.A., R.C. Cochran, D.L. Harmon, **T. DelCurto**, E.S. Vanzant and T.B. Avery. 1988. Evaluation of ruminal evacuation versus marker dilution procedures for estimating particulate passage rates. *J. Anim. Sci.* 66(Suppl.1):361.
- DelCurto, T.,** R.C. Cochran, L.R. Corah and E.S. Vanzant. 1989. Performance and grazing behavior of beef cows grazing dormant, tallgrass-prairie and receiving soybean meal/sorghum grain, alfalfa hay or dehydrated alfalfa pellets as supplemental protein. *J. Anim. Sci.* 67(suppl. 1):305.
- DelCurto, T.,** R.C. Cochran, T.G. Nagaraja, A.A. Beharka and E.S. Vanzant. 1989. Comparison of soybean meal/sorghum grain, alfalfa hay and dehydrated alfalfa pellets as supplemental protein sources for beef steers consuming dormant, tallgrass-prairie forage in confinement. *J. Anim. Sci.* 67(suppl. 1):306.
- Brandyberry, S. D., R. C. Cochran, J. E. Schneider, E. S. Vanzant, **T. DelCurto** and L. R. Corah. 1990. Influence of supplementation method on forage use and grazing behavior of beef cattle grazing bluestem range. *J. Anim. Sci.* 68(suppl. 1):143.
- DelCurto, T.,** R. F. Angell, R. K. Barton and J. A. Rose. 1991. The influence of graded levels of alfalfa pellets on the performance and grazing behavior of beef cows grazing dormant, northern Great Basin rangelands. *J. Anim. Sci.* 69(suppl. 1):510.
- DelCurto, T.,** R. K. Barton, P. R. Cheeke and H. A. Turner. 1991. Urea-ammoniation and(or) supplementation strategies to improve the nutritive value of tall fescue straw for beef cattle production. *J. Anim. Sci.* 69(suppl. 1):510.
- DelCurto, T.** 1991. The potential use of grass seed residues as a ruminant livestock feed resource. Proceedings of the 1991 Farming for Profit and Stewardship: Sustainable Agric. Prog. pp.46-50.
- DelCurto, T.** 1991. Influence of protein supplements on the intake and utilization of low-quality roughages. Proceedings of the 26th Ann. Pacific Northwest Animal Nutr. Conf. pp. 225-240.
- DelCurto, T.,** R. F. Angell, R. K. Barton and J. A. Rose. 1992. Botanical composition and quality of diets selected by beef cattle grazing northern great basin rangelands. *J. Range Manage.* 45(abstr.):64.
- Albro, J. D., D. W. Weber and **T. DelCurto.** 1992. Comparison of whole soybeans, extruded soybeans or soybean meal/barley on digestive characteristics and performance of weaned beef steers consuming mature grass hay. *Proc. West. Sec. Amer. Soc. Anim. Sci.* 43:1.

- Barton, R. K., **T. DelCurto**, S. D. Brandyberry, M. M. Stamm and M. R. Horney. 1992. Physical modification and(or) supplementation strategies to improve the nutritive value of tall fescue straw for beef cattle. Proc. West. Sec. Amer. Soc. Anim. Sci. 43:544.
- Brandyberry, S. D., **T. DelCurto** and R. F. Angell. 1992. Physical form and frequency of alfalfa supplementation for beef cattle winter grazing northern Great Basin rangelands. Proc. West. Sec. Amer. Soc. Anim. Sci. 43:47.
- Brandyberry, S. D., **T. DelCurto**, R. K. Barton and J. A. Rose. 1992. Year and season effects on diet quality of beef cattle grazing northern Great Basin rangelands. Proc. West. Sec. Amer. Soc. Anim. Sci. 43:418.
- DelCurto**, T. D., D. W. Weber, J. D. Albro, T. O. Dill and M. M. Stamm. 1992. Influence of laidlomycin propionate on the intake and digestive characteristics of beef steers grazing pasture forage. Proc. West. Sec. Amer. Soc. Anim. Sci. 43:519.
- Horney, M. R., **T. DelCurto**, M. M. Stamm, R. K. Barton and S. D. Brandyberry. 1992. Early-vegetative meadow hay versus alfalfa hay as a supplement for beef cattle consuming low-quality roughages. Proc. West. Sec. Amer. Soc. Anim. Sci. 43:9.
- Stamm, M.M., **T. DelCurto**, M. R. Horney, S. D. Brandyberry and R. K. Barton. 1992. Influence of alkaloid concentration of tall fescue straw on the nutrition, physiology and subsequent performance of beef steers. Proc. West. Sec. Amer. Soc. Anim. Sci. 43:506.
- Stamm, M. M., **T. DelCurto**, M. R. Horney, K. H. Brandyberry and R. K. Barton. 1992. Nutritional quality of Willamette Valley grass seed residues harvested as livestock feed. Proc. 27th Pacific Northwest Nutr. Conf. p 135 (abstract).
- DelCurto**, T., R. A. Angell, R. Slater, R. A. Barton and J. A. Rose. 1993. Botanical composition of diet and concurrent clipping of forage components as a means of estimating diet quality for grazing ruminants. J. Anim. Sci. 71(suppl.1):193.
- Brandyberry, S. D., **T. DelCurto**, R. K. Barton, K. J. Paintner and K. H. Brandyberry. 1993. Effects of early spring grazing of rangelands used in winter grazing programs in the northern Great Basin. Proc. West. Sec. Amer. Soc. Anim. Sci. Vol. 44.
- Quigley, T. M., A. R. Tiedemann, and **T. DelCurto**. 1993. Fenceless livestock control: An alternative method. Amer. Soc. Agric. Eng. (abstract).
- Brandyberry, S. D., **T. DelCurto**, R. K. Barton, K. H. Brandyberry, K. J. Paintner and R. F. Angell. 1994. Influence of winter environment on the nutritional physiology and performance of beef cattle in the Northern Great Basin. J. Anim. Sci. 72(suppl. 1):152.
- DelCurto**, T., R. K. Barton, S. D. Brandyberry and K. H. Brandyberry. 1994. Influence of alfalfa supplementation frequency on the intake, digestion and performance of beef cattle consuming tall fescue straw. J. Anim. Sci. 72(suppl. 1):336.
- Mills, R. R., C. B. Campbell, and **T. DelCurto**. 1994. Comparison of sequential versus non-sequential implantation of feeder calves. Proc. West. Sec. Amer. Soc. Anim. Sci. Vol. 45.
- Tibbs, T. M., **T. DelCurto**, M. McInnis, A. R. Tiedemann, and T. M. Quigley. 1994. Influence of electronic diversion from riparian areas on livestock grazing behavior, nutritional physiology, stress physiology and performance. J. Anim. Sci. 72(suppl. 1):180.
- Angell, R. A., R. K. Barton and **T. DelCurto**. 1995. The influence of energy supplementation on performance, digestive kinetics, and intake of cattle grazing native flood meadows in eastern Oregon. Proc. West. Sec. Amer. Soc. Anim. Vol. 46:475.
- DelCurto**, T., A. V. Earley, T. May and W. T. Nichols. 1996. Comparison of bambamycin, lasalocid and monensin on the nutritional physiology of beef cattle consuming concentrate base diets. J. Anim. Sci. (suppl. 1).

- Earley, A. V., **T. DelCurto***, T. May, and W. T. Nichols. 1996. Comparison of bambermycins, lasalocid and monensin on the nutritional physiology of beef cattle consuming forage base diets. *J. Anim. Sci.* (suppl. 1).
- Bailey, R. K., S. J. Filley, H. A. Turner, and **T. DelCurto**, 1996. The effects of reducing dystocia and 48 hour calf removal on heifer performance. *Proc. of West. Sect. Amer. Soc. Anim. Sci.* (47:229).
- Filley, H. A., R. K. Bailey, H. A. Turner, and **T. DelCurto**. 1996. The effects of pre- and post-partum nutrition and longhorn breeding on the reproductive success of first- and second- calf heifers. *Proc. of West. Sec. Amer. Soc. Anim. Sci.* (47:273).
- Weder, C. E., **T. DelCurto***, T. Svejcar, J. Jaeger, and R. K. Bailey. 1996. Influence of supplemental alfalfa quality on winter body condition, weight and subsequent reproductive efficiency of beef cattle consuming low-quality roughages. *Proc. of 3rd Livestock Grazing Conf.* (abstract).
- Weder, C. E., **T. DelCurto***, T. Svejcar, R. K. Barton and A. Earley. 1996. The influence of supplemental alfalfa quality on the intake and utilization of low-quality roughage by beef steers with varying levels of protein requirements. *J. Anim. Sci.* (suppl. 1).
- Lowry, A. M. McInnis, and **T. DelCurto**. 1997. The viability of weed seeds and desirable seeds after differential digestion in ruminants. *Society of Range Management Ann. Meetings* (abstract)..
- Hathaway, R. L., **T. DelCurto**, and D. J. Carroll. 1997. Improving economic efficiency by optimizing beef cattle winter feeding programs. *Proc. of West. Sec. Amer. Soc. Anim. Sci.* (48:215).
- DelCurto, T.** 1997. Management of beef cattle for economic sustainability: A focus on the winter feeding period. 32nd Annual PNW Nutrition Conference, Boise, ID.
- Dickard, M. L., P.A. Momont, **T. DelCurto***, N. R. Rimbey, J. A. Tanaka, and M. McInnis. 1998. Offstream water and salt as management strategies for improved cattle distribution and subsequent riparian health. *J. Range Manage. National meetings Abstract*.
- DelCurto, T.**, and K. Olson. 1999. Optimal supplementation strategies with beef cattle consuming low-quality roughages. *Proc. Intermountain Cow Symposium, Twin Falls, ID.*
- DelCurto, T.**, M. Porath, M.L. McInnis, P. Momont, and C. Parsons. 1999. Management strategies for optimal beef cattle distribution and use of mountain riparian meadows. *Proc. Pacific Northwest Range Shortcourse, Moscow, ID.*
- DelCurto, T.** 1999. Supplementation strategies for beef cattle consuming low-quality forages in the western US: An executive summary of a WCC 104 publication. *J. of Anim. Sci.* 77(Suppl. 1):96).
- Suverly, N.A., **T. DelCurto***, S. Paxton, M. Keller, D. W. Weber, and C.A. Parsons. 1999. Effect of lactation and stage of lactation on self-fed supplement intake and performance of beef cows consuming low-quality forages. *Proc. of West. Sec. of Amer. Soc. Anim. Sci.* 50:11.
- Parsons, C. T., P. A. Momont, **T. DelCurto***, and J. L. Sharp. 2000. Effect of season of use on beef cattle distribution patterns and subsequent vegetation use in riparian areas. *Proc. of West. Sec. of Amer. Soc. Anim. Sci.* 51:21-25.
- Wallburger, K., **T. DelCurto***, M. Vavra, L. Bryant, and J. Kie. 2000. The influence of season of use on forage quality, habitat selection, and subsequent gains of beef cattle grazing mountain riparian meadows and adjacent uplands. *Proc. of West. Sec. of Amer. Soc. Anim. Sci.* (manuscript in preparation).
- DelCurto, T.**, B. Johnson, M. Vavra, A. A. Agars, and P. K. Coe. 2000. The influence of season of use on distribution patterns relative to water and resource use by beef cattle grazing mixed forested rangelands. *Proc. of West. Sec. of Amer. Soc. Anim. Sci.* 51:171-175.
- Suverly, N. A., **T. DelCurto***, S. Paxton, M. R. Keller and D. W. Weber. 2000. Effects of timing and frequency of grazing on quality and yield of stockpiled forages in western Oregon. *Proc. of West. Sec. of Amer. Soc. Anim. Sci.* 51:262-266.

- Suverly, N. A., **T. DelCurto***, J. Jaeger, and M. Keller. 2000. The influence of cow age on the consumption of hand-fed supplements and subsequent performance of beef cows winter grazing stockpiled forages. *Proc. of West. Sec. of Amer. Soc. Anim. Sci.* 51:281-285.
- Jaeger, J. R., and **T. DelCurto**. 2000. Efficacy of feeding a probiotic to yearling replacement beef heifers in a wintering backgrounding program. *Proc. of West. Sec. of Amer. Soc. Anim. Sci.* 51:510-512.
- Damiran, D., S. Findholt, **T. DelCurto***, and B. Johnson. 2000. A comparison of bite-count derived botanical composition of diet and clipping vs. rumen evacuation as techniques to estimate diet quality with grazing beef cattle. *Proc. of West. Sec. of Amer. Soc. Anim. Sci.* 51:517-520 .
- Findholt, S. L., D. Damiran, B. K. Johnson, **T. DelCurto**, and J. G. Kie. 2001. Inter- and intraspecific summer foraging dynamics of mule deer, elk, and cattle. *Wildlife Soc. Meetings* (submitted).
- Bohnert, D. W., C. S. Schauer, M. L. Bauer, and **T. DelCurto**. 2001. Influence of rumen protein degradability and supplementation frequency on steers consuming low-quality forage: Ruminal fermentation and site of digestion. *Proc. West. Sec. Amer. Soc. Anim. Sci.* 52:311-316.
- Bohnert, D. W., C. S. Schauer, and **T. DelCurto**. 2001. Influence of rumen protein degradability and supplementation frequency on performance and nitrogen use in ruminants consuming low-quality forage: Cow performance and efficiency of nitrogen use in wethers. *Proc. West. Sec. Amer. Soc. Anim. Sci.* 52:305-310.
- Bohnert, D. W., C. S. Schauer, **T. DelCurto**. 2001. Beet pulp supplementation of heifers grazing native flood meadow: Performance and ruminal fermentation. *Proc. West. Sec. Amer. Soc. Anim. Sci.* 52:340-343.
- McInnis, M. L., J. McIver, **T. DelCurto**, and P.A. Momont. 2002. Influence of grazing season on streambanks. *Soc. of Range Manage. Ann. Meeting* (abstract).
- Morrison, J. A., **T. DelCurto***, C. T. Parsons, G. D. Pulsipher, and E. S. Vanzant. 2002. The influence of cow age on grazing distribution and utilization of mountain riparian areas and adjacent uplands. *Proc. West. Sec. Amer. Soc. Anim. Sci.* 53:53-57.
- Shirley, T. R., C. J. Ackerman, G. D. Pulsipher, **T. DelCurto**, C. S. Schauer, and T. A. Currier. 2002. Daily vs. alternate day supplementation of soybean meal or wheat middlings to steers consuming low quality hay. *Proc. West. Sec. Amer. Soc. Anim. Sci.* 53:185-189.
- Jaeger, J. R., K. C. Olson, **T. DelCurto**, and A. Qu. 2002. Predicting the time of parturition in Spring Calving Beef Cows. *Proc. West. Sec. Amer. Soc. Anim. Sci.* 53:204-207.
- Damiran, D., **T. DelCurto***, D. W. Bohnert, G., D. Pulsipher, and S. Findholt. 2002. Comparison of techniques and grinding size to estimate digestibility of forage base ruminant diets. *Proc. West. Sec. Amer. Soc. Anim. Sci.* 53:341-344.
- DelCurto, T.** 2002. Optimal supplementation strategies for beef cattle production in the western United States. *Proc. Oregon Vet. Conf.* 15 pp.
- Darambazar, E., **T. DelCurto***, C. J. Ackerman, D. Damiran, and J. A. Morrison. 2003. The influence of cow age on botanical composition of diets in mixed conifer mountain riparian areas and adjacent uplands. *Soc. of Range Manage. Ann. Meeting* (abstract).
- DelCurto, T.**, M. Porath, C. Parsons, and J. A. Morrison. 2003. Management Strategies for sustainable beef cattle grazing on forested rangelands. Symposium Invited Paper: "Livestock Grazing Distribution: Impacts on Enterprise and Environmental Sustainability." *Soc. of Range Manage. Ann. Meeting* (abstract).
- Walburger, K., M. Vavra, **T. DelCurto***, J. Kie, and L. Bryant. 2003. Effects of 25 years of cattle grazing on vegetation and stream banks of meadow creek in the Starkey Experimental Forest. *Soc of Range Manage. Ann. Meeting* (abstract).
- Wells, M., M. Vavra, **T. DelCurto***, K. Walburger, B. Johnson, and P. Coe. 2003. Influence of cattle age on distribution and grazing patterns in northeast Oregon mixed conifer forested rangelands. *Soc. of Range Manage. Ann. Meeting* (abstract).

- Fisher, M. J., D. W. Bohnert, C. J. Ackerman, C. S. Schauer, **T. DelCurto**, A. M. Craig, E. S. Vanzant, D. L. Harmon, and N. F. Schrick. 2003. Evaluation of perennial ryegrass straw as a forage source for ruminants. *Proc. West. Sec. Amer. Soc. Anim. Sci.* 54:30-35.
- White, J. J., G. D. Pulsipher, and **T. DelCurto***. 2003. Effects of forage quality and type of protein supplement on intake and digestibility in beef steers and performance of postpartum beef cows. *Proc. West. Sec. Amer. Soc. Anim. Sci.* 53:210-215.
- Damiran, D., **T. DelCurto***, S. L. Findholt, G. D. Pulsipher, and B. K. Johnson. 2003. Influence of previous cattle and elk grazing on the subsequent quality and quantity of diets for cattle, deer, and elk grazing late-summer mixed-conifer rangelands. *Proc. West. Sec. Amer. Soc. Anim. Sci.* 53:320-324.
- Darambazar, E., **T. DelCurto***, C. J. Ackerman, G. D. Pulsipher, and D. Damiran. 2003. Changes in forage quantity and quality with continued cattle grazing in a mountain riparian pasture. *Proc. West. Sec. Amer. Soc. Anim. Sci.* 53:325-328.
- Pulsipher, G. D., D. W. Bohnert, **T. DelCurto**, K. J. Walburger, M. S. Wells, and J. J. White. 2003. Effect of protein supplementation of warm versus cool season forages on intake, digestibility, and ruminal fill in beef steers. *J. Anim. Sci.* 81(suppl. 1):92.
- DelCurto, T.**, D. W. Bohnert, C. S. Schauer, and G. D. Pulsipher. 2003. Complementary forages and grazing systems for beef cattle production on arid rangelands in the Western US. *J. Anim. Sci.* 81(suppl. 1):123.
- Jaeger, J. R., and **T. DelCurto**. 2004. Endogenous prostaglandin concentrations in bovine whole semen, seminal plasma and extended semen. *Proc. West. Sec. Amer. Soc. Anim. Sci.* 55:18-21.
- Walburger, K. J., **T. DelCurto.**, M. Vavra, and G. D. Pulsipher. 2004. The long-term effects of cattle and(or) big game herbivory and logging on the subsequent diet quality of steers grazing grand fir (*abies grandis*) habitats in Northeastern Oregon. *Proc. West. Sec. Amer. Soc. Anim. Sci.* 55:257-260.
- Walburger, K. J., T. DelCurto, and M. Vavra. 2005. The long-term effects of ungulate herbivory and timber harvest on the subsequent diet quality of steers grazing Ponderosa pine (*Pinus ponderosa*) habitats in northeastern Oregon. Abstract; *Soc. Range Ecol. Manage.*

Abstract reflects an invited presentation

* *Graduate student or research assistant supervised by candidate*

D. Grant, Contract, and “In Kind” Support:

DelCurto, T. and H. A. Turner. 1990. Ammoniation and(or) supplementation of grass seed residues for beef cattle production. Submitted to Oregon State University Agricultural Research Foundation:

- \$6500.00 funded

DelCurto, T., P. R. Cheeke and H. A. Turner. 1990. Ammoniation and(or) supplementation of grass seed residues for beef cattle production. Submitted to Linn-Benton Regional Strategy Applied Research Fund:

- \$26,643 funded with a \$15,697 industry match (\$42,340 total)

Vavra, M., T. DelCurto and R. F. Angell. 1990. Identifying livestock and forage responses to winter grazing in the northern Great Basin. Submitted to USDA Competitive Grants Program:

- \$65,000 funded

DelCurto, T. 1991. Use of grass seed residues as a winter feed resource for beef cattle production. Submitted to Linn-Benton Regional Strategy Applied Research Fund:

- \$9,200 funded with a \$10,063 industry contribution (\$19,263 total)

Weber, D. W. and T. DelCurto. 1991. Influence of laidlomycin Propionate on intake and digestion of pasture forage by beef steers. Submitted to Syntex Corp. Animal Health, Research and Development:

- \$16,148 funded

Brandyberry, S. D. and T. DelCurto. 1991. Research proposal and academic records for S. B. Brandyberry doctorate program. Submitted to Ralston Purina Graduate Fellowships Program:

- \$12,000 funded

Ballerstedt, P. J. 1991. Calibration of near infrared reflectance spectroscopy (NIRS) for determination of forage quality of Oregon-grown grass seed straws. Submitted to Oregon Department of Agriculture Center for Applied Agriculture Research and the Oregon Seed Council (\$50,000 funding request). Cooperative agreement was made to fulfill research obligations:

- \$30,000 funded

Note: Dr. Peter Ballerstedt was unable to fulfill the expectations of the grant. Dr. David Hannaway and I were requested to fulfill the commitments of Dr. Ballerstedt. My portion of the project was the \$30,000 funded for forage collections and wet chemistry.

DelCurto, T. 1992. Physical modification and/or supplementation as strategies to increase the nutritive value of grass seed residues for livestock production. Submitted to Oregon Department of Agriculture Field Burning Alternatives Competitive Grants Program.

- \$52,402 funded

DelCurto, T., M. McInnis, M. Vavra, A. R. Tiedemann and T. M. Quigley. 1992. The Influence of electronic diversion from riparian areas on livestock grazing behavior, nutritional physiology, stress physiology and performance. Submitted to Oregon State University Agric. Research Foundation:

- \$59,000 funded

DelCurto, T. 1993. Contract agreement to serve as the Research Coordinator for the Blue Mountain Natural Resources Institute:

- \$25,000 funded

DelCurto, T., D. W. Weber, T. May (New Mexico State Univ.) and W. Nichols. 1994. Comparison of rumensin, lasalocid and bambermycin on the intake, digestion and fermentation characteristics of beef cattle consuming forage and concentrate base diets. Submitted to Hoechst-Roussel Agri-Vet Company.

- \$35,000 funded to Oregon State University Agric. Research Foundation.

Cook, J. (NCASI), B. K. Johnson (ODF&W) and **T. DelCurto**. 1995. Interaction of breeding date and summer nutrition on calf elk survival. Submitted to Oregon Department of Fish and Wildlife, Rocky Mountain Elk Foundation and PNW Forest Service.

- \$392,000 funded for a three year project

Momont, P. A. (U.of I.), **T. DelCurto** (OSU), J. C. Mosley (U.of I.), N. R. Rimbey (U.of I.) and J. Tanaka (OSU). 1995. Cattle grazing dispersion methods and riparian ecosystems. Submitted to the Environmental Protection Agency's Agriculture in Concert with the Environment (ACE) program.

- EPA & BMNRI funds, respectively \$42,000 + \$75,000 = \$117,000

- DelCurto, T.** 1996. Utilization of urea in pelleted tall fescue straw beef cattle diets. Unrestricted gift from the Harvest Feed Company. - \$24,000 funded
- Hathaway, R., D. Carroll, and **T. DelCurto.** 1997. Improving economic efficiency by optimizing Oregon beef winter feeding programs.
-\$10,000 from OSU Extension Innovation Grant Program.
- Hathaway, R., D. Carroll, and **T. DelCurto.** 1997. Oregon Feed Library.
-\$8,000 from the OSU Animal Sciences Team Research Program.
- Hathaway, R., D. Carroll, and **T. DelCurto.** 1998. Improving economic efficiency by optimizing Oregon beef winter feeding programs.
-\$4,000 from OSU Extension CAS Program.
- Momont, P. A. (U.of I.), **T. DelCurto** (OSU), N. R. Rimbey (U.of I.), M. McInnis, J. McIver (BMNRI), and J. Tanaka (OSU). 1998. Cattle grazing dispersion methods and riparian ecosystems. Submitted to the USDA SARE program.
- Total SARE funds \$105,400 - OSU portion \$ 47,100
- DelCurto, T.,** and B. Johnson. 1998. Inter-and intra-specific summer foraging dynamics of mule deer, elk, and cattle. Proposal funded in part by the PNW Forest Service, Rocky Mountain Elk Foundation, Oregon Department of Fish and Wildlife.
- RMEF & PNW contribution to OSU: \$40,000
- DelCurto, T.** 1998. Intake and performance of Beef cattle consuming low-quality roughages supplemented with self-fed baked molasses protein supplements. Contributions (in kind) of \$5,000 and \$3,000 unrestricted gift to Agricultural Research Foundation (\$8,000) from Western Feeds, Inc.
- DelCurto, T.** 1999. Efficacy of feeding Select Sires Bio-Cycle Plus to growing beef cattle in a winter backgrounding program.
-\$10,000 unrestricted gift to the Agricultural Research Foundation.
- DelCurto, T.,** J. Kie, and M. Vavra. 2000. Mountain Riparian Area Grazing Systems: Summarizing 25 years of beef cattle research on Meadow Creek of the USDA Starkey Experiment Forest and Range
-\$15,000 from the PNW Res. Sta. of the USDA Forest Service
- DelCurto, T.,** and J. Kie. 2002. Retrospective effects of ungulate herbivory on forest structure across diverse environmental conditions of the Blue Mountains. USDA Forest Service,
- \$40,000 funded, 8-01-2002 to 12-31-2003
- \$119,000 amendment to the above grant awarded in 2003
- DelCurto, T.,** and M. Vavra. 2003. Predicting the carrying capacity of forests in transition and its relevance to restoring elk herds in the northwest. Cooperative project with multiple agencies including Boise Cascade Corporation, Oregon Department of Fish & Wildlife, National Council for Air and Stream Improvement, Oregon State University (EOARC Union Station), USDA-FS Pacific Northwest Research Station, and US Geological Survey (total project funds \$517,000).
- \$184,000 funded for EOARC contribution for the 2003, 2004, and 2005 field seasons.
- \$ 77,000 funded for Diet Quality analysis for the 2004, 2005, and 2006 field seasons
- Kennedy, P., **T. DelCurto,** and S. Debano. 2006. Impact of Grazing on Ground Nesting Birds: A Foodweb Approach. Project Funded by the USDA NRI Ecosystems Program.
- \$450,000 funded by the USDA NRI
- \$210,000 for the grazing and vegetation ecology portion (DelCurto lead)
- TNC provided for the building of the experimental pastures (\$200,000)

DelCurto, T. 2008. Retrospective Effects of Ungulate Herbivory on Forest Structure. Funds provided by the USDA Forest Service PNW Station for ongoing research
- \$60,000

Muller, C. A., and T. DelCurto. 2008 & 2009. Evaluation of Cow Efficiency and Subsequent Effects on Milk Production and Composition
- \$100,000 funded by consecutive grants by the Oregon Beef Council

DelCurto, T. 2012. Influence of Herbivory on the Ecology of Mixed-conifer Forested Rangelands in the inland Pacific Northwest
- \$94,000 funded by the USDA Forest Service PNW Station

DelCurto T. 2013. Overstory Understory Relationships on Mixed-Conifer Rangelands.
- \$ 75,000 funded by the USDA Forest Service PNW Station

Endress, B. and T. DelCurto. 2013. Disturbance Understory Forest as a function of Elevational Gradients.
- \$ 209,000 funded by the USDA Forest Service PNW Station

DelCurto, T. 2014. Habitat Effectiveness Models for Beef Cattle on Forested Rangelands.
- \$ 108,902 funded by the USDA Forest Service PNW Station

Wisdom, M., M. Rowland, T. DelCurto and B. Endress. 2014. Meadow Creek Restoration, Monitoring and Grazing Project.
- \$987,000 funded by Bonneville Power Administration to the USDA Forest Service for restoration and infrastructure improvements.
- \$175,000 dedicated to the facilities and fencing to accommodate the beef cattle research

Endress, B., and T. DelCurto. 2015. Meadow Creek Restoration, Monitoring and Grazing Project.
- \$ 389,904 funded by the USDA Forest Service PNW Station

TOTAL FUNDING ACQUIRED (1989 to present): **\$2,996,559**

E. Service to the Public (non-professionally related)

Union County Youth Soccer Coach, 1999 to 2005
Cove School District Budget Committee, 1995 – 2001
Cove Education Foundation Board Member, 1998 – 2002
Cove School Board Member, appointed 2002 to 2013
Union/Baker County Educational Service District Budget Board Member, 2003 to 2006
Cove School Board Vice Chairman, elected, 2003
Cove School Board Chairman, elected, 2004 & 2005
Grande Ronde Child Center Board Member, 2006-2008
4-H Beef Leaders (with my wife, Tamara) for the Mt. Fanny Stockholders Club (2000 to 2002)
4-H Club Leaders (with my wife, Tamara) for the Cove Livestock Club (2002 to present)
Union County Fair Board of Directors 2004 to 2010
Union County Fair Board Junior Auction Committee Chair 2006 to present
Union County Fair Livestock Show Superintendent 2010 - present
Cove School District FFA Alumni Board, 2012 – present

F. Awards

Selected **Participant** in the Land Grant **ESCOP/ACOP Leadership Program**, 1995.

Young Scientist Award, Western Section of the American Society of Animal Science, 2000

Savery Award, Outstanding Young Faculty, College of Agricultural Sciences, Oregon State University, 2001

Western Section Competition Paper, 1st Place, 2002. My graduate student (Julie Morrison) prepared and presented the 1st place presentation which evaluates the quality of the research, quality of the manuscript, and quality of the oral presentation.

Honorary Member Cove School District **FFA Chapter**. 2006.

Outstanding Service Award. 2008. Presented to the Eastern Oregon Agricultural Research Center, Union Station by the Oregon 4H Association.

The Oldfield/Jackman Team Award for Oregon State University College of Agricultural Science. 2010. Member of the Oregon Cereal Leaf Beetle Team. Cooperated with effort to introduce biological control agent to control outbreak and spread of cereal leaf beetles.

Honorary Oregon State FFA Degree. 2010.

Outstanding Service Award. 2011. Presented to the OSU Agriculture & Natural Resource Program at Eastern Oregon University by the Oregon FFA Association.

Lead 21 Participant. 2011. Represented Oregon State University as a participant in a leadership training program for Land Grant Universities.

Grand Marshalls Union County Fair. Tim & Tammi DelCurto. 2011.

The Oldfield/Jackman Team Award for Oregon State University College of Agricultural Science. 2012. Member of the Zumwalt Prairie Food-Web Research Team. Provided the range and beef cattle research expertise for a multidisciplinary/multi-agency team evaluating the impact of livestock grazing on ground nesting birds.

Meritorious Service Award. 2014. Presented to Tim and Tammi DelCurto by Union County 4H.